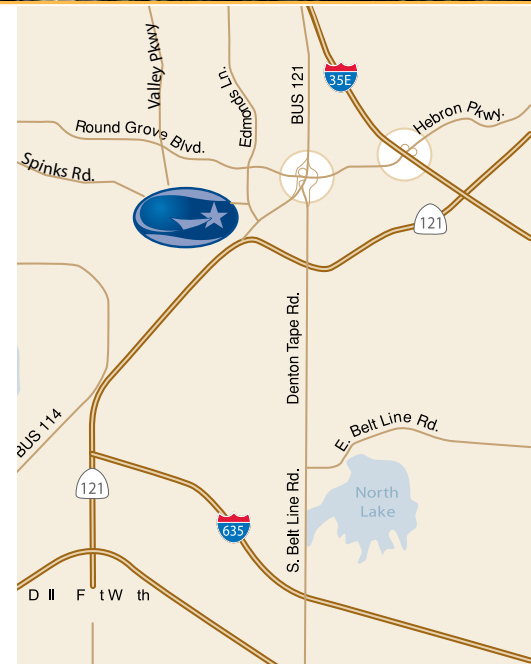


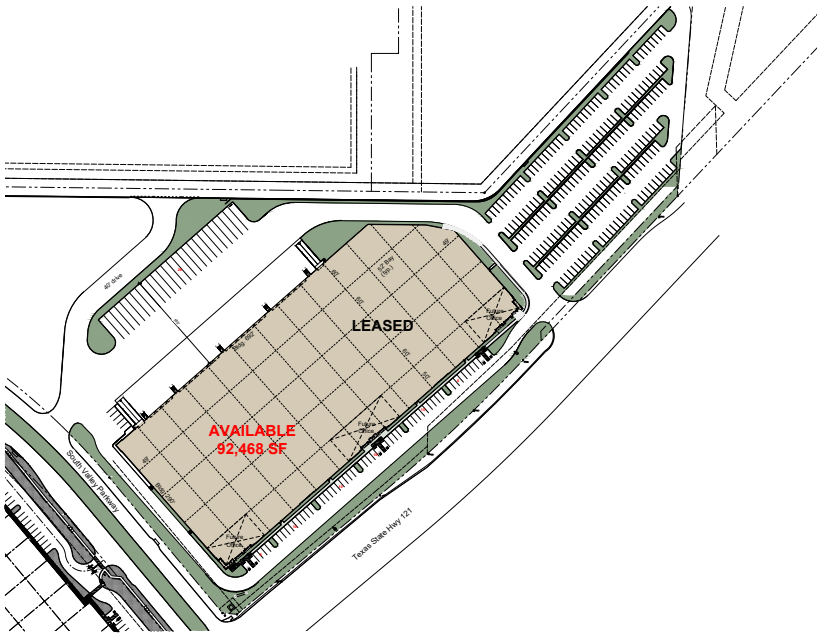
**Building 8: 92,468 SF**  
 2951 S. Valley Pkwy, Lewisville, TX

**Building 10: 89,900 SF**  
 2950 S. Valley Pkwy, Lewisville, TX



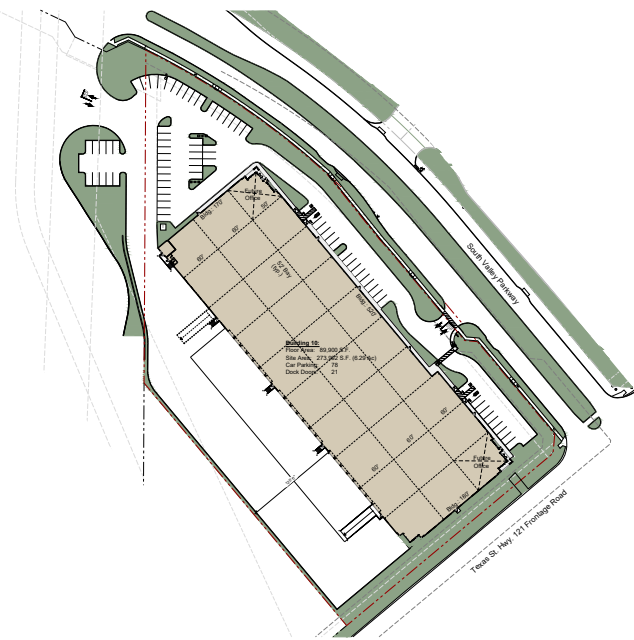
Majestic Airport Center DFW is a Class "A", 215 acre, master planned business park consisting of approximately 3.5 million square feet in Lewisville, Texas. Located minutes from DFW International Airport, the project offers easy and immediate access to four major arteries throughout the city, as well as supreme visibility from State Highway 121. Sophisticated design and infrastructure provides an ideal setting to achieve a competitive advantage in the DFW marketplace. The project will feature Triple Freeport, incentives from the City of Lewisville, as well as Foreign Trade Zone.





**BUILDING 8:**  
2951 S. Valley Pkwy, Lewisville, TX

Site Area:	9.10 Acres
Building Area:	92,468 SF
Car Parking:	52
Trailer Parking:	26
Clear Height:	32'
Dock Doors:	17 w/full vision panel and Z-Guards
Ramp:	1
Skylights:	4' x 8'
Clear Story Windows:	4' x 8'
Configuration:	Rear Load
Sprinklers:	ESFR
Truck Court:	185' deep
Typical Bay Spacing:	52' x 60'



**BUILDING 10:**  
2950 S. Valley Pkwy, Lewisville, TX

Site Area:	6.82 Acres
Building Area:	89,900 SF
Car Parking:	78
Clear Height:	32'
Dock Doors:	21 w/full vision panel and Z-Guards
Skylights:	4' x 8'
Clear Story Windows:	4' x 8'
Configuration:	Rear Load
Sprinklers:	ESFR
Truck Court:	125' deep
Typical Bay Spacing:	52' x 60'

**INTERIOR FEATURES**

- White Underside of Deck
- White Painted Tilt Panels
- White Painted Columns